


Kaynemaile for Interiors





Amada Tapas & Wine Hanging Screen | Chattanooga, United States

 Amanda Trotter

Architectural
Record
2023 RECORD PRODUCTS
OF THE YEAR
Winner

Stay up to date:

- REFER KING & DAWSON
DWG 9222/103, 403 &
404 FOR FLOOR
DETAILS & STRUCTURAL
DETAILS &
FIRE RATED CEILING
DETAILS.
- © @kaynemaile
 - f @Kaynemaile.Mesh
 - in kaynemaile-limited
 - © /kaynemaile

CONTACT US:

USA Toll Free 1-855 387 5440
AU Austaron Surfaces +61 2 9822 7055
NZ +64 4 473 4989

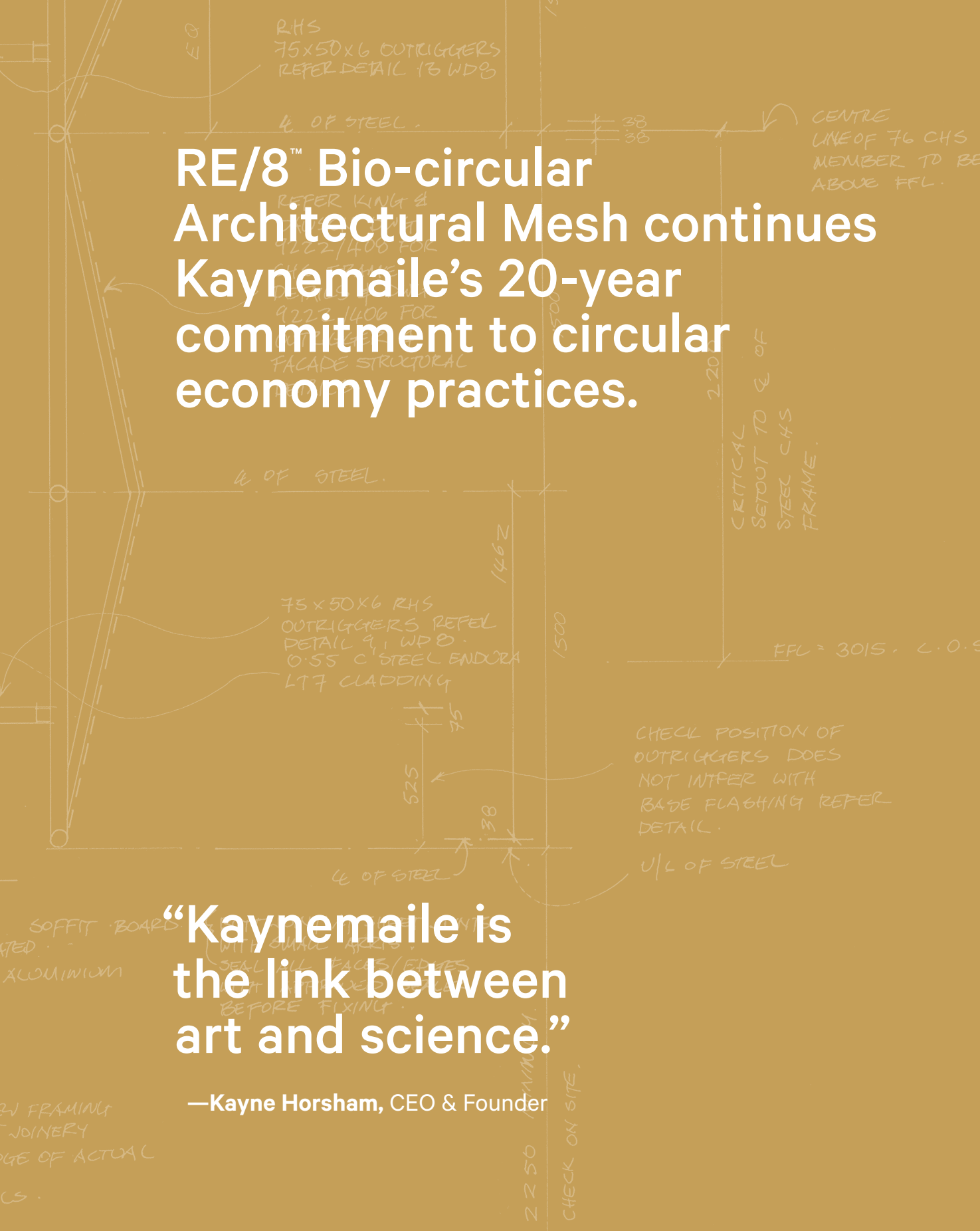
sales@kaynemaile.com

www.kaynemaile.com

www.kaynemaile.com/re8

For more on our interior
range, visit us online:
kaynemaile.com/interior





RHS
75x50x6 OUTRIGGERS
REFER DETAIL 13 W/D

4 OF STEEL

38
38

CENTRE
LINE OF 76 CHS
MEMBER TO BE
ABOVE FFL.

REFER KING &
DETAIL 13 W/D
922/400 FOR
DETAIL 13 W/D
922/400 FOR
FACADE STRUCTURAL

2200

CRITICAL
SETOUT TO C OF
STEEL CHS
FRAME.

1500

4 OF STEEL

1462

75x50x6 RHS
OUTRIGGERS REFER
DETAIL 9, W/D
0.55 C STEEL ENDORA
LT7 CLADDING

525

75

38

FFL = 3015, C.O.S

CHECK POSITION OF
OUTRIGGERS DOES
NOT INTERFERE WITH
BASE FLASHING REFER
DETAIL.

U/L OF STEEL

SOFFIT BOARD
WITH SMALL APERTS
SEAL ALL FACES/EDGES
BEFORE FIXING.

2250
CHECK ON SITE.

RE/8™ Bio-circular Architectural Mesh continues Kaynemaile's 20-year commitment to circular economy practices.

“Kaynemaile is
the link between
art and science.”

—Kayne Horsham, CEO & Founder



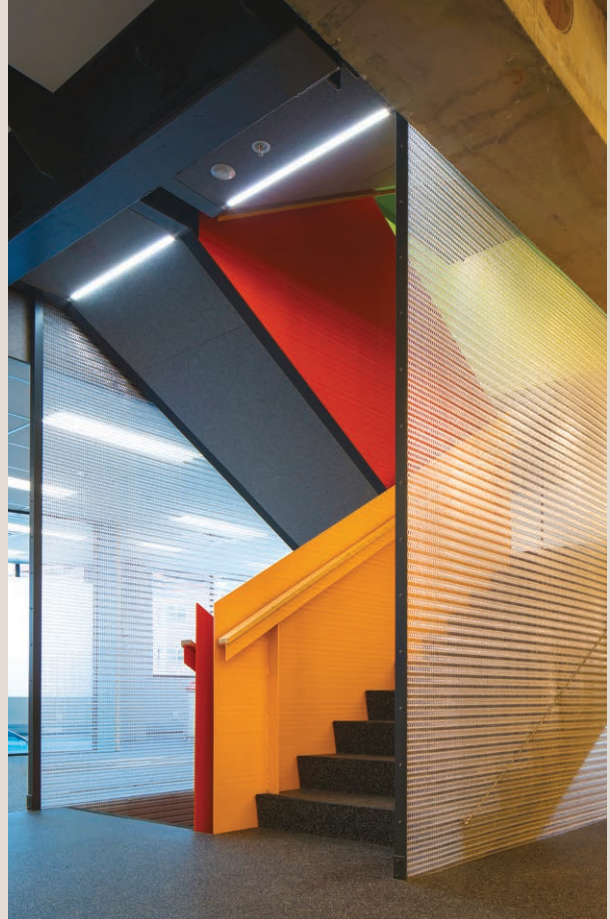


Functional and Beautiful

Kaynemaile creates and defines interior spaces in uniquely beautiful ways. Our architectural mesh combines the benefits of airflow and transparency in a lightweight material, extending the possibilities for your next interior project.

Kaynemaile for Interiors

Our hanging, folding or framed screens are a unique way to create privacy and divide spaces. For a dramatic statement, our ceiling features are a simple and effective way to transform an interior space.



Hanging Screens

Kaynemaile hanging screens are a simple ceiling-hung solution. Use them to divide interior spaces, create visual privacy and as decorative backdrops.

kaynemaile.com/hanging-screens

Framed Screens

Kaynemaile framed screens are designed to fit into framed openings and work perfectly in interior door, window frames and cabinetry.

kaynemaile.com/framed-screens

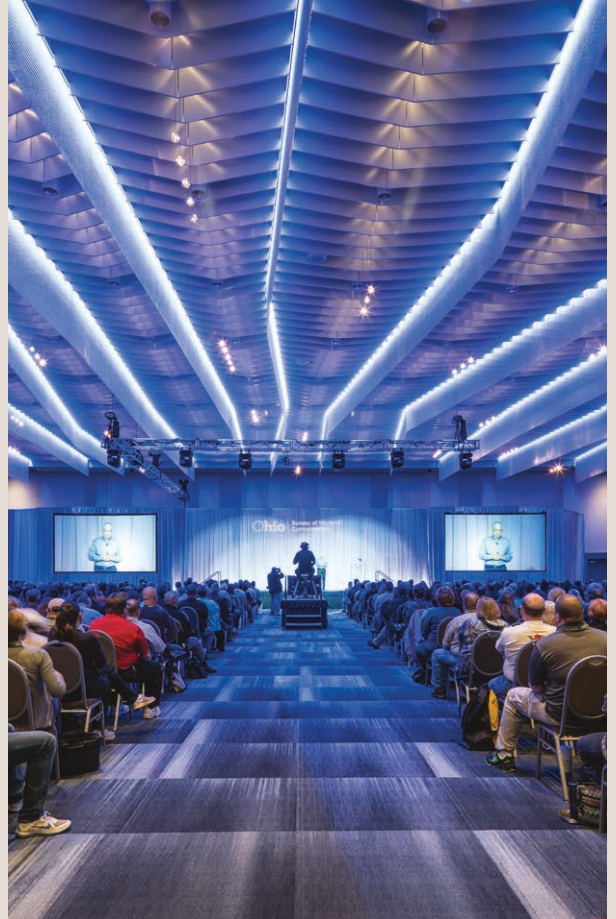
For technical information visit kaynemaile.com/technical or contact us sales@kaynemaile.com



Folding Screens

Kaynemaile folding screens can be used to divide spaces temporarily, then retracted when not needed. They are ideal for creating smaller, more intimate spaces within open plan areas.

kaynemaile.com/folding-screens



Ceiling Features & Lighting

Kaynemaile ceiling and lighting features can be used as an eye-catching and cost-effective way to elevate your interior projects.

kaynemaile.com/ceiling-features



Reshaping Retail

PRODUCT

Ceiling Feature

DESIGN

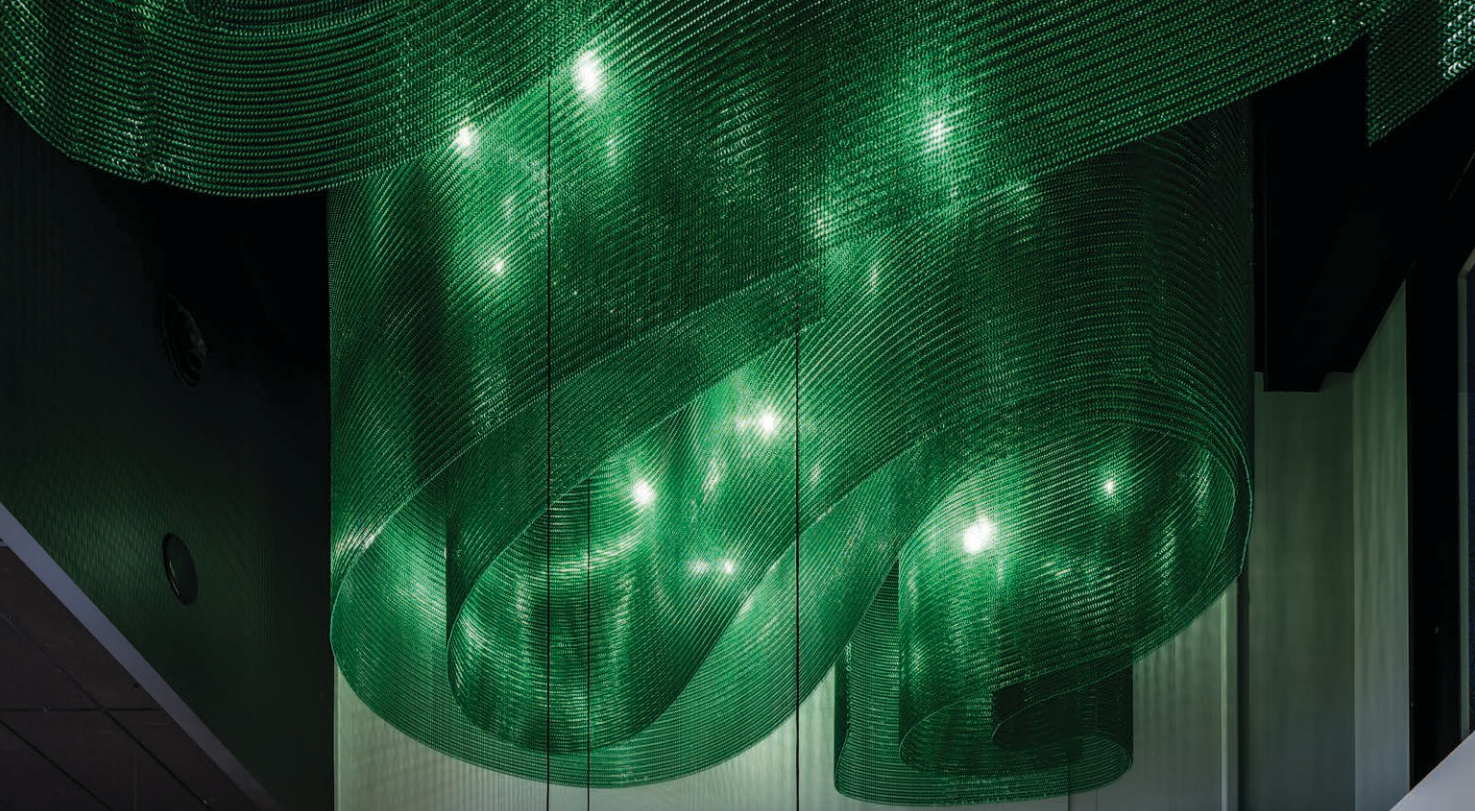
Warren and Mahoney

LOCATION

Christchurch, New Zealand

The large interior space and full height windows gave an opportunity for a bold and enticing centre piece for this refreshed retail store. Our translucent Jade Green ceiling feature folds through the void, filling the overhead space with a rich luminosity.

The continuous nature of this piece is made possible by our unique manufacturing technique, allowing our RE/8 mesh to be made in single pieces to any dimension.



SAMSUNG

Switch
secure way to move
to Galaxy









© Samuel Hartnett



Light, Airy & Secure

PRODUCT

Hanging Screen

DESIGN

Tim Mein Architects

LOCATION

Rotorua, New Zealand

Kaynemaile worked with Tim Mein Architects to provide screening between the land-side and air-side areas of this airport terminal. The Water Clear mesh screens form a visual and secure barrier without the need for a rigid partition system or interior glazing.



←  Arrivals Taenga Mai	←  Toilets Wharepaku
←  Baggage Collect He Kohikohi Putea	←  Cafe Wharekai
←  Car Rentals Nga Reti-motuka	←  Retail Tauhokohoko
←  Business Hub Hub Pakihi	↙  Parking Payment Teihana Reti
←  Private Charters Tūtohunga Tūmataiti	↙  ATM Mihini tuku moni



ARTURES



Creative Waves

PRODUCT

Hanging Screen

DESIGN

Cox Architecture

LOCATION

Perth, Australia

Elegant and sophisticated, this richly textured lobby creates a warm and inviting entranceway for staff and guests at this Perth workplace.





This wave-shaped screen adds a warm textural element to the lobby, complimenting the rich palette of materials.

Curved screens are easy for Kaynemaile. The mesh can be fitted to a curved hanging rod or stretched across a frame to create curved three-dimensional shapes. Kaynemaile screens can be made to any size without annoying gaps or joins, giving you complete freedom to create unique, organic forms.

← **OVER:** The curved screen offers a textural element to the lift lobby.

↑ **ABOVE:** A strong material palette enriches this workplace.

→ **RIGHT:** Detail of the bronze coloured Kaynemaile screen on curved rod.

WINNER
WA
Architecture
Awards



Winding Through the Office

PRODUCT

Ceiling Feature

LOCATION

Atlanta Georgia, USA

This fit-out for a leading technology company in Atlanta effortlessly blends bold colour with subtle hues, creating a relaxed atmosphere for employees and the occasional office dog.

The strong geometry of the stair is enhanced by a continuous ribbon of our Water Clear mesh, delicately wound over multiple floors.









Lightening the Mood

PRODUCT

Ceiling Feature

DESIGN

LMN Architects, Schooley Caldwell

LOCATION

Columbus Ohio, USA

LMN Architects created two custom ceiling features at the Greater Columbus Convention Centre. Both ceilings incorporate continuous lengths of our Water Clear mesh hung between the ceiling baffles. With LEDs next to the mesh, Kaynemaile gives huge scope for lighting effects.







Circular Connections

PRODUCT

Hanging Screen

DESIGN

TD Solutions

LOCATION

Ho Chi Minh City, Vietnam

This coffee house in Vietnam seamlessly blends our hanging screens within a contemporary, yet classically inspired fit-out. The screens define smaller, intimate spaces without the need for rigid partitions, offering visual transparency while maintaining airflow.







Playful Movement

PRODUCT

Ceiling Feature

DESIGN

Designworks

LOCATION

Christchurch, New Zealand

Inspired by a nearby winding river, this beautiful bronze coloured ceiling feature at the Crowne Plaza Hotel is lit from above and brings a warmth to the space as guests arrive. Our mesh gives up to 75% airflow through the cross sectional open area, allowing air compliant movement to be maintained.



Best.

WINNER
Silver Pin—
Spatial
Design,
Hospitality



Dividing Work Spaces

PRODUCT

Hanging Screen

DESIGN

Sheppard & Rout Architects

LOCATION

Christchurch, New Zealand

This hanging screen in a new office fit-out provides visual privacy while maintaining transparency and uninterrupted airflow. The large screen curls around storage units and office equipment, providing a functional component to an elegant screening solution.



↑ **ABOVE:** The Kaynemaile screen provides spatial separation between the reception and work stations behind.

→ **RIGHT:** The Water Clear mesh screen curls elegantly around storage units and office equipment.





© Bruce Damonte



Sculptural Ceiling Ribbons

PRODUCT

Ceiling Feature

DESIGN

HKS Dallas, TX

LOCATION

YouTube Theatre, Inglewood, CA, USA

Kaynemaile sculptural pieces transform the large spaces of the YouTube Theatre in Inglewood, California. Continuous ceiling hung ribbons wind through the lobby while a spiraling chandelier stretches up to 12 metres over the balcony bar.





Beautiful Protection

PRODUCT
Framed Screen

DESIGN LEFT
architecture+
Wellington, New Zealand

DESIGN TOP
Studio Dolce Vita Homes, Antonio Citterio,
Patricia Viel and Partners and Coima
Milan, Italy

Kaynemaile Framed Screens are perfect for framed openings, diffusing the light and offering a unique hard wearing material for high traffic environments.

Taking the Stage

PRODUCT

Projection and Theatrical Screens

The three-dimensional nature of our mesh extends the options for production design, providing for a wider range of angles and effects and allowing performers to become immersed into lighting and digital projection.

With the strength and light weight of polycarbonate, Kaynemaile screens are the perfect choice for stunning performance and stage design.



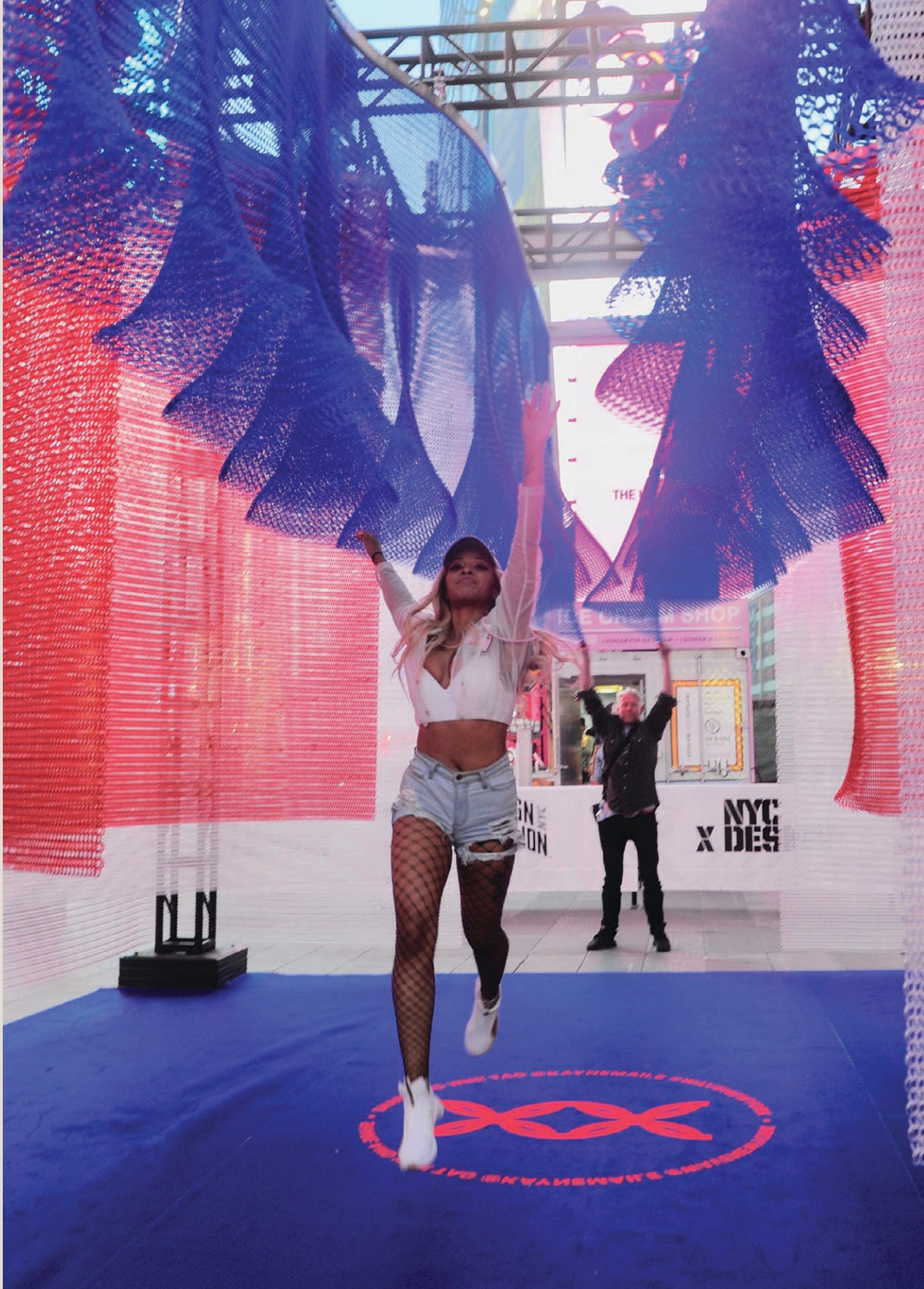
→ **RIGHT:** Performance screen in Water Clear mesh, Wellington, New Zealand.

↓ **BELOW AND PREVIOUS:** Kaynemaile's projection screens integrate into a performance of WOW (World of Wearable Arts), Wellington, New Zealand.

→ **FAR RIGHT:** Our #WAVENEWYORK installation was a centerpiece of NYCXDESIGN's Times Square design festival and took home an award for Best Achitectural Product in 2017.



Life, Sun Yé, Ma Yúru – Zhou Honglei, China



Why use RE/8 Bio-circular Architectural Mesh by Kaynemaile.

Kaynemaile's Class A compliant polycarbonate mesh is a patented, world-leading innovation. With over 60 years of polycarbonate material science and research to call on, we know our mesh inside out.

We think the benefits of our product are extraordinary.



RE/8 Bio-circular Architectural Mesh

RE/8 architectural mesh is comprised of an industry first cradle-to-gate carbon neutral polycarbonate by Covestro, a leading global producer of advanced polymers.



Airflow

Our mesh gives approximately 75% airflow through the cross sectional open area. This means air compliant movement can be maintained in exterior and interior spaces.



Solar Reduction

RE/8 architectural mesh significantly reduces radiant heat through direct sunlight (EMR) from reaching the building surface by up to 70%. This gives you the ability to let daylight in and manage the passive solar gain – all while maintaining visual transparency.



Lightweight and Unlimited Size

RE/8 architectural mesh is lightweight (3kgs per square metre) and is not limited by panel size. We can make our screens to any height or width without joints or distracting gaps. Making screens to the size you need gives you design freedom and cost efficiency.



Trusted Durability

Metal based materials corrode and oxidise in coastal conditions. RE/8 does not. We use colour-fast pigments that will not stain your building when it rains.



Unbeatable Strength

Our mesh is made from the highest performing Makrolon RE polycarbonate. It is extremely robust and impact resistant. Thermally stable from -40°F to 248°F (-40°C to 120°C). Our mesh holds true to its tensile strength.



Simple Attachment Systems

Our attachment methods for both exterior and interior systems are simple and we provide these as part of our system. We can help you with detailing and specification information. Contact us at sales@kaynemaile.com



Fire Performance

KML22 65-FR

Test	Result
USA	
ASTM E84-19 Flame Spread index (FSI): 5 Smoke Developed Index (SDI): 350	Class A
NFPA 286	Pass, meets standard criteria (Class A)
NFPA 285	Pass, meets standard criteria
NFPA 268	Pass, meets standard criteria
NFPA 701	Pass
Conforming with section 803.12 stability at 200°F	Meets standard criteria
ASTM D 635	Classified HB and Class CC1
ASTM D 1929 Self-Ignition Temperature	968°F (520°C)
ASTM D 1929 Flash Ignition Temperature	842°F (450°C)
ASTM D 2843 Smoke Density Rating	70.9
EU	
BS EN 13501-1:2007 + A1:2009	B-s1, d0
BS EN ISO 11925-2:2010	Compliant
BS EN 13823:2010 + A1:2014	Compliant
DIN 4102 part 1	Pass B1
NZ / AU	
AS ISO 9705 Room Corner Test <i>NZBC verification method C/MV2 appendix A</i>	1s—Smoke production not more than 0.5m ² /s ² x 1000
NCC Specification C1.10	Group 1 flammability rating. SMORGA of 0.5m ² /s ²
AS 1530.3	Regulatory indices - Ignition index = 0 Spread of flame index = 0 Heat evolved index = 0 Smoke developed index = 1
IMO Resolution A.652	Pass smouldering cigarette & match flame equivalent
UL94-VO/3.0	Self-extinguishing

Colour Options

We've come up with a range of standard colours to give you a wide variety of looks for your interior project.

Colour Details

Standard Colours

Flat White, Ruby Red, Azure Blue, Water Clear, Jade Green, Marine, Bronze, Champagne, Copper, Steel, Obsidian Black and Translucent Black.

Finishes

All colours are in a gloss finish.

Translucent Colours

Our translucent range is available in Ruby Red, Azure Blue, Water Clear, Jade Green, Marine, and Translucent Black.

Custom Colours

If you have a multi-job site or large project and you need a custom colour then get in touch to discuss the options. Minimum quantities apply to custom colours.

Warranty

Kaynemaile's RE/8 Bio-circular Architectural Mesh for standard interior applications has a 10 year warranty.*

**Excludes kinetic or custom applications. Contact Kaynemaile to discuss your specific application.*



Flat White

Ruby Red

Azure Blue

Water Clear

Jade Green

Marine

Bronze

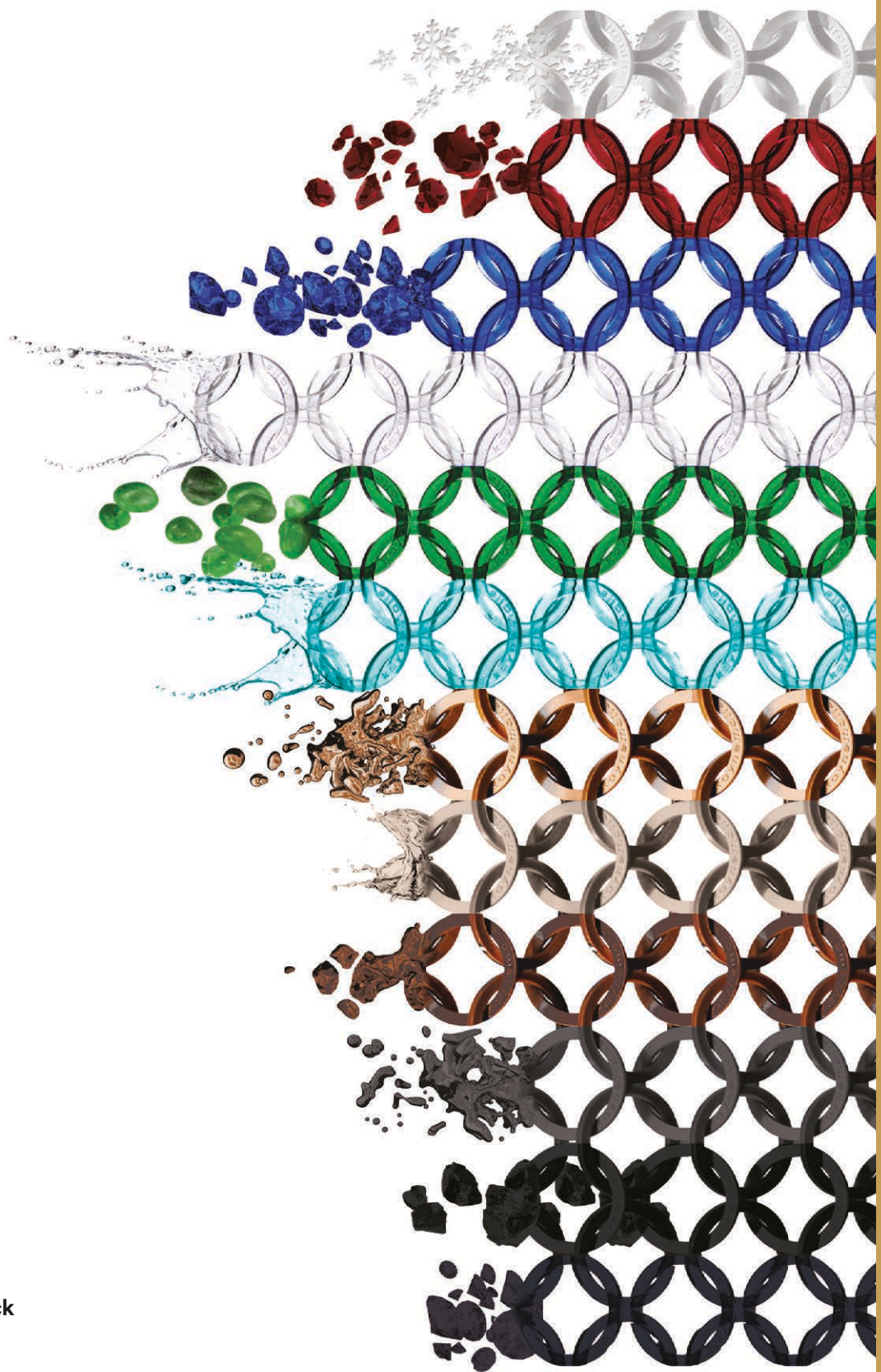
Champagne

Copper

Steel

Obsidian Black

Translucent Black



Kaynemaile Hanging Screens

Kaynemaile hanging screens are a simple ceiling-hung solution utilising a stainless steel hanging tube and ceiling hook system. Use them to divide interior spaces, create visual privacy and as decorative backdrops.

For more visit:

www.kaynemaile.com/hanging-screens

Features

Weight: 3kg m² (0.6lbs/ft²)

Sizes: Unlimited in size.

Colour palette: All Kaynemaile standard colours are suitable for interior use. For colour range see page 48 of this booklet.

Custom shapes: We can make curved screens by bending the top hanging tube to the specified dimensions. Contact us to discuss your requirements.

Hanging system: 12.7mm (0.5in) diameter stainless steel hanging tube and our proprietary stainless steel ceiling hooks. Spacing of hooks is approximately 600mm (23.5in).

Supplied hardware: Hanging screens are supplied with RE/8 architectural mesh and all hanging hardware you need for installation.

Hanging System

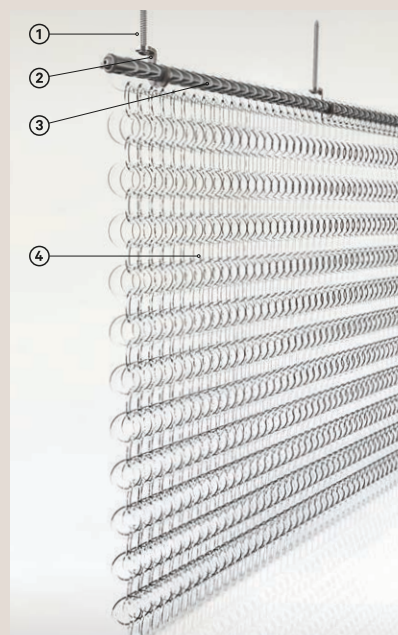
Our systems are simple – screw the supplied hooks into your ceiling substrate and hook the hanging tube over the hooks. Let us know what your ceiling substrate is and we will supply the correct screws.

To create a more rigid screen, our hanging screens can be fixed to the floor as well as the ceiling using our stainless steel tube and hook system.

Kaynemaile standard interior screens are not suitable for balustrade or safety from falling applications.

Standard Top Fixing Detail

- 12.7mm (0.5in) stainless steel hanging tube, with proprietary stainless steel hooks at 600mm (23.5in) approximate centres.
- Standard screen fixings are available for timber, steel and masonry.



Additional fixings can be added at the bottom for screen tension if required.



- ① Fixing Screw
- ② S/S Hook
- ③ S/S Hanging Tube
- ④ RE/8™ Bio-circular Architectural Mesh

Kaynemaile Framed Screens

Kaynemaile framed screens are designed to fit into framed openings such as sliding doors, screens and interior window openings. They are perfect with cabinetry, retail point-of-sale, commercial applications and look great with feature lighting.

For more visit:

www.kaynemaile.com/framed-screens

Features

Weight: 3kg m² (0.6lbs/ft²)

Sizes: Unlimited in size.

Colour palette: All Kaynemaile standard colours are suitable for interior use. For colour range see page 48 of this booklet.

Supplied hardware: Framed screens are supplied with RE/8 architectural mesh, anodised aluminium track and press fit mesh clips along with standard screw fixings.

Fixing System

Kaynemaile framed screens utilise our 23mm x 10mm low profile anodised aluminium track at all edges combined with our press fit clips to connect the mesh under light tension.

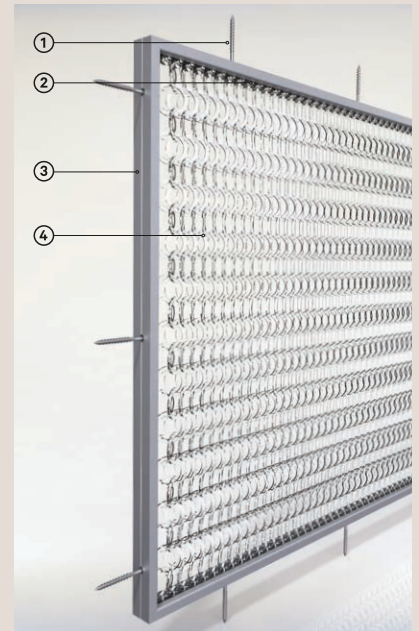
Our low-profile edge track is designed to fix directly to a substrate or framework and comes pre-drilled at 200mm centres for fast install.

Kaynemaile interior framed screens are not suitable for balustrade or safety from falling applications.

Frame Requirements

Kaynemaile framed screens are not self-supporting and are designed to fit within a framed opening or structure (not supplied). The screens are under light tension.

For small to medium cabinetry installations most typical cabinet framework will be suitable. Larger feature screens will require additional support or framing.



- ① Fixing Screw
- ② Polycarbonate Press Fit Clip
- ③ Low Profile Aluminium Track
- ④ RE/8™ Bio-circular Architectural Mesh



Collaborate with us

We're happy to answer your questions –
from product information to technical assistance.
Call or send us an email. We're here to help.

RHS
75x50x6 OUTRIGGERS
REFER DETAIL 13 W/D

C. OF STEEL.

38
38

CENTRE
LINE OF 76 CHS
MEMBER TO BE
ABOVE FFL.

9222/408 FOR
OUTRIGGER & DWG
9222/406 FOR
OUTRIGGER &
FACADE STRUCTURAL

C. OF STEEL.

2200

CRITICAL TO SETOUT
OF STEEL CLAS
FRAME.

75x50x6 RHS
OUTRIGGERS REFER
DETAIL 9, W/D.
0.55 C STEEL ENDORA
LT7 CLADDING

FFL = 3015. C.O.S

CHECK POSITION OF
OUTRIGGERS DOES
NOT INTERFERE WITH
BASE FLASHING REFER
DETAIL

U/L OF

C. OF STEEL

SOFFIT BOARD. (BOTT JOINT AT SHEET JOINTS
WITH SMALL AIRGAP)

Kaynemaile®

CONTACT US:

USA Toll Free 1-855 387 5440

RE/8™

AU Austaron Surfaces +61 2 9822 7055

NZ +64 4 473 4989

sales@kaynemaile.com

KAYNEMAILE.COM



material
bank



© 2024 by Kaynemaile®
Kaynemaile Interior V24_1

Except as provided by the New Zealand Copyright Act 1994, no part of this publication may be reproduced
or stored in a retrieval system in any form or by any means without the prior written permission of Kaynemaile.

Discover our exterior
applications online

Kaynemaile® 

RE8™